



Welcome to the City's  
**GIS Internet site**  
<http://gis.modestogov.com>

gis.modestogov.com is designed for citizens to work with maps and information about the City of Modesto. Containing maps and data, citizens can use this interactive web site to view and search for streets, parks, addresses, businesses and other City of Modesto information. In addition, citizens can access general information about properties, create occupant mailing labels and find the building permits for a specific parcel.

### System Requirements

#### Browser:

- This application requires IE 6 or higher.
- The application can also be viewed with Firefox, Chrome or Safari but not all functionality is guaranteed to work properly.

#### Plug-In:

- This application requires MS Silverlight 4 be installed.
- Some links to external sites require Adobe Flash be installed.

#### Tip:

- For best viewing results, a screen resolution of at least **1024 x 768** should be used.

#### Click to Select, Drag to Pan Tool:

**Navigate** - Use this tool to navigate around the map by using the left mouse, hold and pan the map to the new location and release the mouse button.

**Select** - To select something, left mouse click on the feature and the results will be displayed in the Data Box window in the lower right hand corner.

**Zoom In\*** - Hold the Shift key down, left mouse click and drag a rectangle around the zoom location then release the key and the button.

**Zoom Out\*** - Hold the Shift and Ctrl keys down, left mouse click and drag a rectangle then release the keys and the button.

\*Use your scroll wheel (in between the mouse buttons) to zoom in and out.



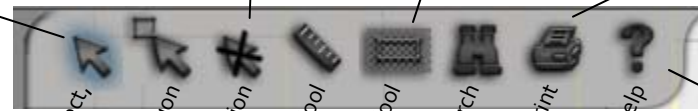
#### Buffer Tool:

Select a feature. Either select a preset buffer or type in a custom buffer size. Select the *Create Buffer* button. To create a mailing list select the *General Addresses* button. To remove the buffer, select the *Clear Buffer Graphics* button.

#### Print Tool:

Select the Print button. The Input Map Title window comes down. Enter in a title or leave it blank and click the *Submit* button. Select the printer and click the *Print* button. **Note:** Make sure the orientation of the printer is Portrait in order for the map to print Landscape.

### Toolbar



Click to Select,  
 Drag to Pan

Select Polygon

Clear Selection

Measure Tool

Buffer Tool

Address Search

Print

Help



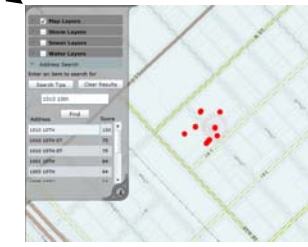
#### Select Polygon Tool:

Select the Select Polygon Tool icon. Left mouse click, hold and drag a rectangle around the features to select. The features will be selected, highlighted in red and the information will be displayed in the Data Box in the lower right hand corner. Limited to 2000 features selected.



#### Measure Tool:

Select the Measure Tool icon. Select either Area or Distance to measure. Click on the map to start the measure. Click as many times as necessary to collect the desired measurement. Double click to finish.



#### Address Search Tool:


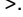
Select the Address Search Tool icon. Highlight the current text in the search box and type in the new search for address with suffix (Rd, Ave, St...), business or intersection (Using the &). Select the *Search Tips* button for more details. Click the *Find* button. The results will be returned below and the map will display the results with a red dot.


#### Help Tool:

Be sure to check out the online Help.

# GIS MODESTO

- Map Layers**
- Airport
  - Bikepaths
  - Business Licenses
  - CFD
  - Council Districts
  - Fire Management Areas
  - Fire Stations
  - General Plan
  - Golf Courses
  - Jurisdictions

**Layer List:**  
 Scroll and turn layers on and off by checking the box next to the layer. To show the legend symbol for the layer, select the  next to the layer. Group layers can be expanded by clicking on the . One Group will always be open.

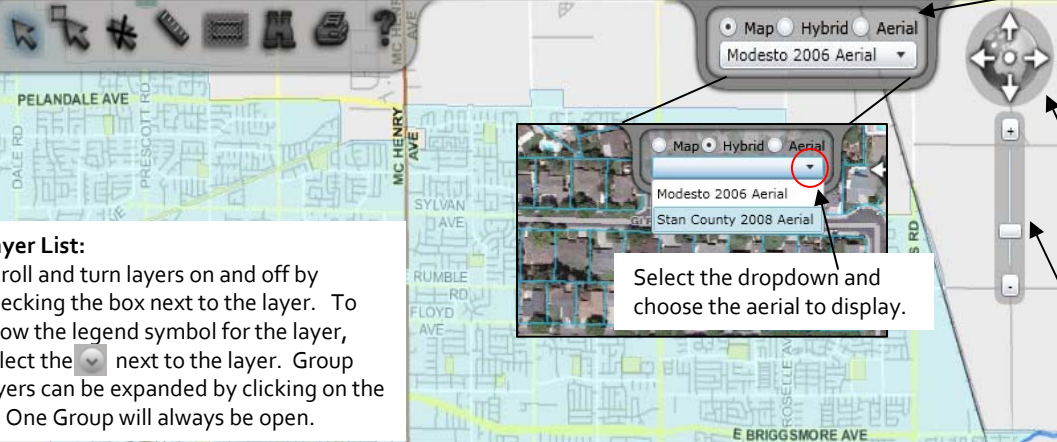
To open and close the Layer List, click on .

### Coordinate Display

X = 6439115.5 Y = 2065151

Click on **L,L** to display the coordinates in Latitude/Longitude.

Click on **X,Y** to display the coordinates in State Plane, Unit Feet, NAD 83.



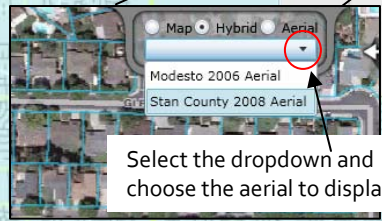
### Aerial Control:

Three display views:

1. Map – displays different map layers.
2. Hybrid – Aerial with parcels and roads displayed. Zoom in to display the labels.
3. Aerial – Just the aerial view.

Use the 4 arrows to navigate around the map or select the center dot to go back to the original extent.

Use the slide bar to zoom in and out of the map by dragging the button up and down or clicking on the plus and minus buttons.



Select the dropdown and choose the aerial to display.

**Identify Results**  
 105037035 (Parcels)  
 MODESTO (Jurisdictions)

**General Information:**  
 Displays the Assessor Parcel information.

General Info	Building Permits	Drilldown
<b>APN</b>	105037035	
<b>Property Street Number</b>	Null	
<b>Property Street Direction</b>	Null	
<b>Property Street</b>	10TH	
<b>Property Street Type</b>	ST	
<b>Property City</b>	MODESTO	
<b>Property State</b>	CA	
<b>Property Zip</b>	95354-0803	
<b>Year Built</b>	0	
<b>TRA</b>	002173	
<b>Perimeter (Ft)</b>	2228.356777	
<b>Sq Ft</b>	31844.822219	

Street View | Bird's Eye View

**Identify Results**  
 105037035 (Parcels)  
 MODESTO (Jurisdictions)

General Info	Building Permits	Drilldown
Council District	District 2 (Link)	
Zoning	C-2 (Link)	
General Plan	RPD	
CFD	None	
Redevelopment Area	C,R,P	
SOI	MODESTO	
Fire Management Areas	STATION 1	
School Districts	MODESTO CITY ELEMENTARY, MODESTO UNIC HIGH	

Tax Information  
 Assessor Mapbook  
 Assessor Parcel Inquiry

### Drilldown Information:


The Drilldown displays the specific data and links that pertain to the selected parcel. The links to the Stanislaus County Assessment Data are available at the bottom of this window.

**Identify Results**  
 105037035 (Parcels)  
 MODESTO (City Limits)

General Info	Building Permits	Drilldown
Case #	Description	
BLD2000-42731	ADD 6-METER 1200 AMP METERED SERVICE TO EXISTING SERVICE - REDEVELOPMENT AGENCY WILL PAY PERMIT FEES	
BLD2007-51028	REMODEL 2ND FLOOR FOR FINANCE CUSTOMER SERVICES, CONTACT STEVE PACE - 3/17/08 EXPIRED PERMIT APPLICATION.	
BLD2008-62696	TI - (STE 4684) INSTALL T-BAR CEILING, LIGHT FIXTURES, AND ELECTRICAL - STATISTICAL PURPOSE ONLY	
BLD2008-63574	TI - (4TH FL) CONSTRUCT A HARD WALL OFFICE & RELOCATE DOOR IN EXISTING OFFICE	
BLD2009-70348	TI - (STE 6400) REMODEL TWO OFFICES INTO THREE OFFICES	

View Detail

**Building Permit Information:**  
 Select the Building Permits tab to display the permit activity per parcel. Select a building permit, click on the **View Detail** button to view the details of the permit.

To open and close the Data Box, click on .